

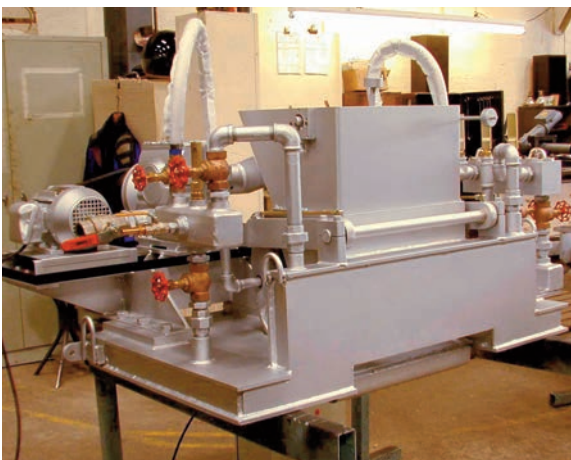
> STATIC BATCH CHARGER (SBC)

The Static Charger is both durable and inexpensive, simple to install and cheap to maintain. Suitable for use in challenging operating conditions and will effectively seal a doghouse on furnaces up to 200 TPD.

The Twin Static Charger offers extra control and production flexibility is gained from its adjustable twin pusher system.

FEATURES (SINGLE OR TWIN):

- > Suitable for all types of glass
- > Suitable for all types of furnace
- > Robust manufacture for longer life
- > High grade mild or stainless steel fabrication
- > Fewer moving parts for reduced wear and maintenance
- > Fully programmable with MCS integration
- > Completely seals the doghouse for energy efficiency



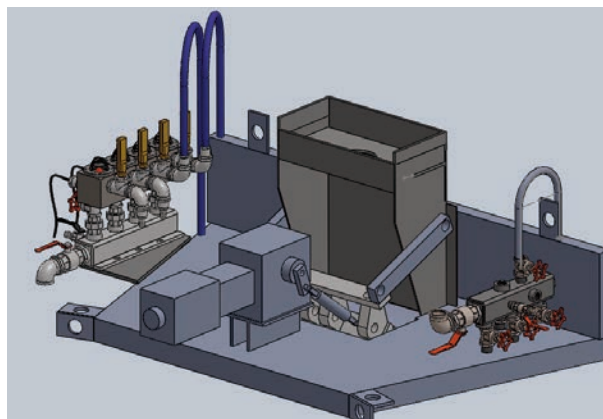
> SPECIFICATIONS

| Static Charger size by Pusher width (mm) | *Output (tonnes/day) | Weight (kg) | ** Water (litres/min) |
|--|----------------------|-------------|-----------------------|
| 255 mm (Mini) | 4-35 | 440 | 20 |
| 355 mm (Minor) | 10-50 | 450 | 20 |
| 510 mm (Major) | 50-100 | 680 | 25 |
| 685 mm (Wide Major) | 80-150 | 800 | 30 |
| 965 mm (Super Major) | 200+ | 900 | 35 |

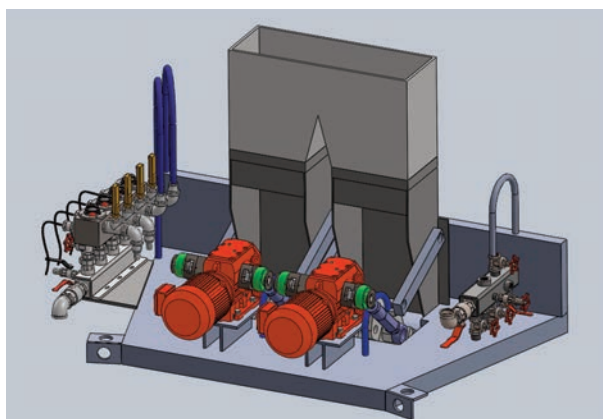
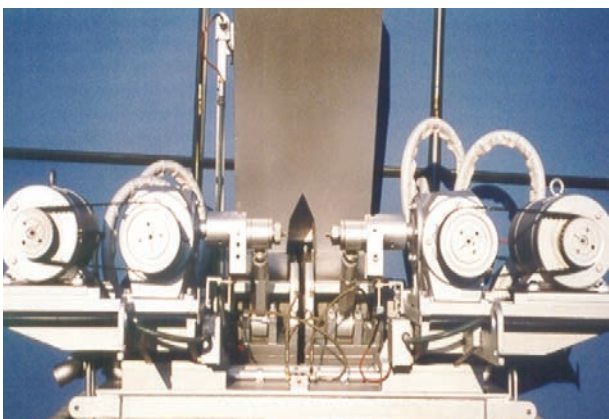
Note: Twin Static to be sized on customer furnace specification. *Method of feeding, moisture content, granulometry, cullet % all effect the output rate.

** Must be clean re-circulated water conforming to a given specification.

> STATIC AND CONTROL CUBICLE



> TWIN STATIC CHARGER



OPTIONAL FEATURES

- > Dust tight & tropicalisation measures
- > Hardox coating of key areas
- > Customer choice of electrical components
- > Fully electronic adjustment (to allow remote set-up)
- > Digitisation
- > Safety fence or cage (isolated)
- > Mounting gurney
- > Isolated water system



Glassworks Hounsell Ltd
Park Lane,
Halesowen,
West Midlands B63 2QS

Tel: +44 (0) 01384 560666
sales@glassworkshounsell.co.uk

glassworkshounsell.co.uk
glassworksengineering.co.uk
glassworksequipment.co.uk



PRECISION **BRITISH** ENGINEERING