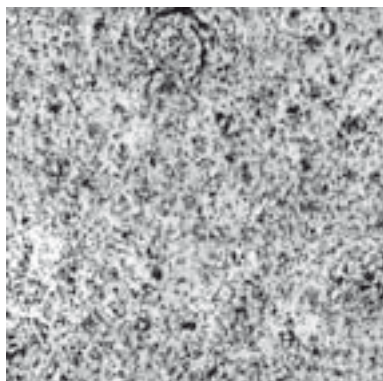
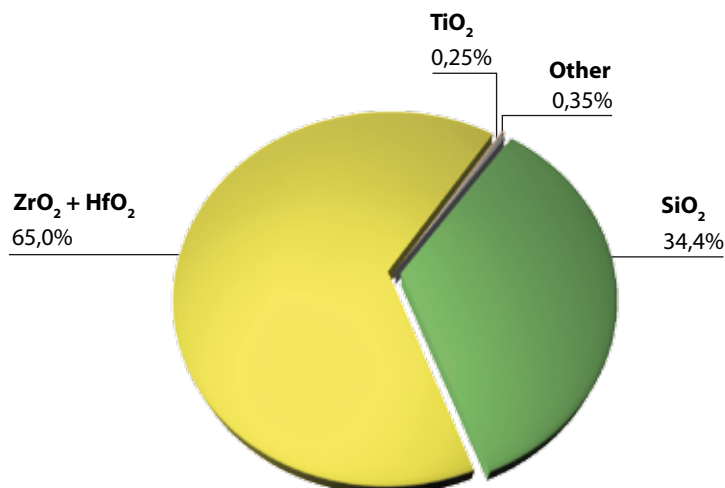


ZS 835 THE MATERIAL

CHEMICAL ANALYSIS



TYPICAL CHEMICAL COMPOSITION



ZS 835 isostatically pressed zircon refractory is made of very pure zirconium silicate glass contact material that has been specifically formulated to assure low outgassing (low blister potential) in critical refiner, forehearth and feeder applications.

PHYSICAL CHARACTERISTICS

International System	British Standard Units
Bulk density 3.88 g/cm ³ 242 pcf
Open porosity 11% 11%
Cold modulus of rupture 62 MPa 8992 psi
Cold crushing strength 276 MPa 40030 psi
Coefficient of thermal expansion 4.8 10 ⁻⁶ K ⁻¹ 2.7 10 ⁻⁶ F ⁻¹
Thermal conductivity at 1000°C 2.9 W.m ⁻¹ .K ⁻¹ 20.1 BTU in hr ⁻¹ ft ⁻² F ⁻¹
Thermal shock resistance low low

TYPICAL APPLICATIONS

This unique material is used wherever seeds or blisters cause quality problems. Typical applications include refiners, forehearth, bushing blocks, and feeder parts for melting borosilicate and opal glasses.

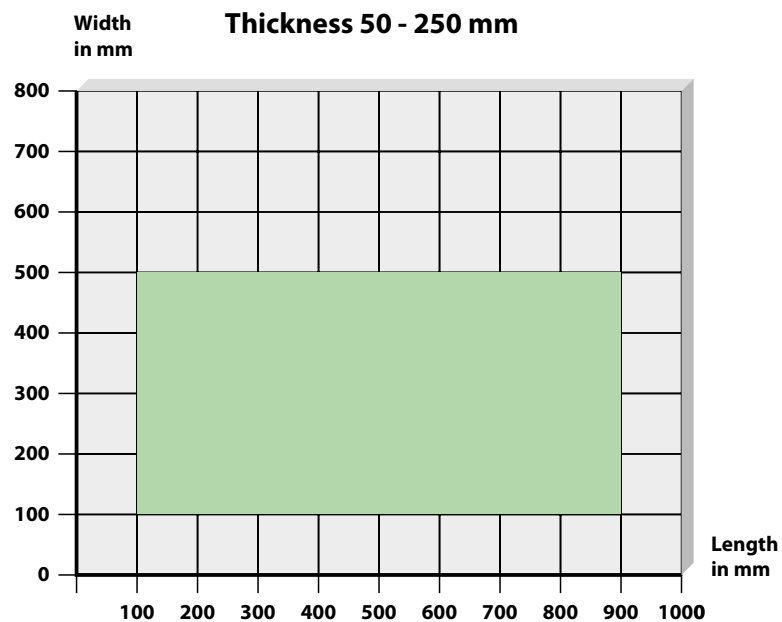
ZS 835

THE MATERIAL



Sidewall block

SIZE CAPABILITY ESTIMATES



The data quoted above provides average values for current production and is not contractual. If further information is required, please contact the Saint-Gobain SEFPRO Marketing Department.